



Retail

HUB**VICTORIA**



# At the heart of a thriving retail and leisure destination

*The HUB is surrounded by world class brands, experiences and amenities and sees very high footfall being adjacent to Victoria Station.*

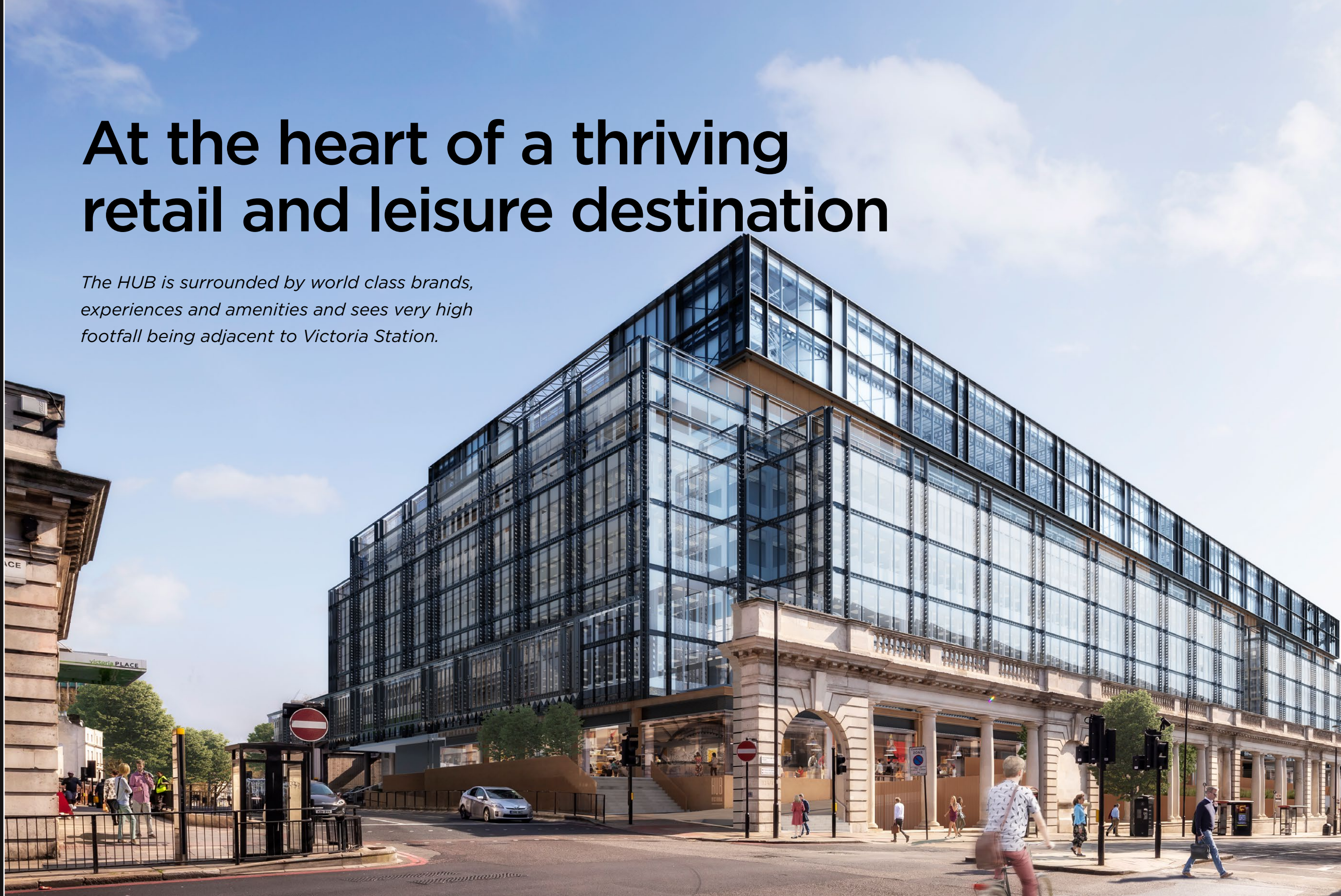
## Introduction

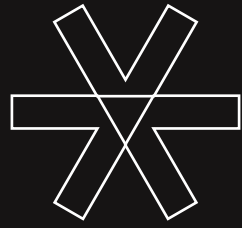
Your Neighbourhood

Site Plan

Retail Units

Contact





Introduction

**Your Neighbourhood**

*Location*

*Area Map*

Site Plan

Retail Units

Contact

Eaton Square Gardens

Belgravia

Green Park

Buckingham Palace

Victoria Nova

Victoria Station  
Market Halls  
Victoria

St James's Park  
Cardinal Place

Eccleston Square



**207,000 people pass through Victoria Station every day**



Introduction

**Your Neighbourhood**

*Location*

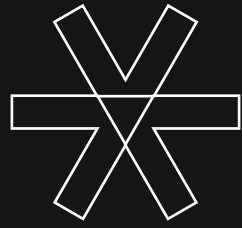
*Area Map*

Site Plan

Retail Units

Contact





Introduction

**Your Neighbourhood**

*Location*

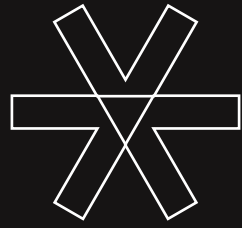
*Area Map*

Site Plan

Retail Units

Contact





Introduction

**Your Neighbourhood**

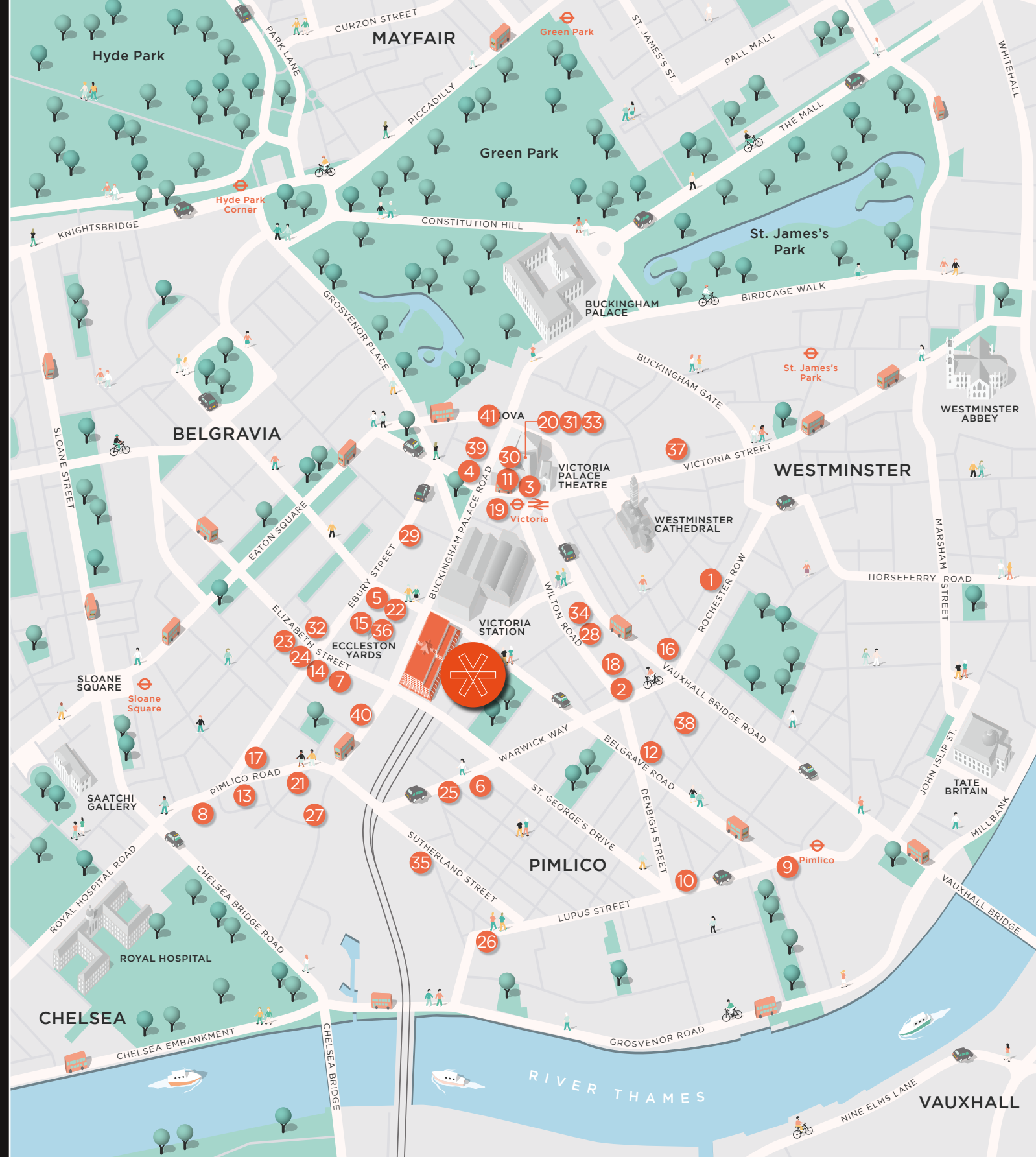
Location

Area Map

Site Plan

Retail Units

Contact



**FOOD & DRINK**

RETAILERS

LEISURE

# Food & Drink

**RESTAURANTS, CAFÉS & BARS**

- |                              |                           |
|------------------------------|---------------------------|
| 01. 2 Amici                  | 22. Ole & Steen           |
| 02. About Thyme              | 23. Olivocarne            |
| 03. Aster                    | 24. Peggy Porschen Cakes  |
| 04. Bleecker Burger          | 25. The Pimlico Grid      |
| 05. Boisdale of Belgravia    | 26. Pimlico Spice         |
| 06. Cambridge Street Kitchen | 27. The Rising Sun        |
| 07. Dominique Ansel Bakery   | 28. Rosa's Thai Cafe      |
| 08. Enoteca Turi             | 29. Santini               |
| 09. The Gallery              | 30. Sourced Market        |
| 10. Goya                     | 31. Sticks 'n' Sushi      |
| 11. Greenwood                | 32. The Thomas Cubitt     |
| 12. Grumbles                 | 33. Timmy Green           |
| 13. Hunan                    | 34. Tozi                  |
| 14. Il Convivio              | 35. The White Ferry House |
| 15. Jones Family Kitchen     | 36. Wild by Tart          |
| 16. The Jugged Hare          | 37. The Ivy Victoria      |
| 17. La Poule au Pot          | 38. A Wong                |
| 18. Lorne                    | 39. Pizza Pilgrims        |
| 19. Market Halls Victoria    | 40. Pullbrook & Gould     |
| 20. Nova Food                | 41. Singapulah            |
| 21. No 11 Pimlico Road       |                           |





Introduction

**Your Neighbourhood**

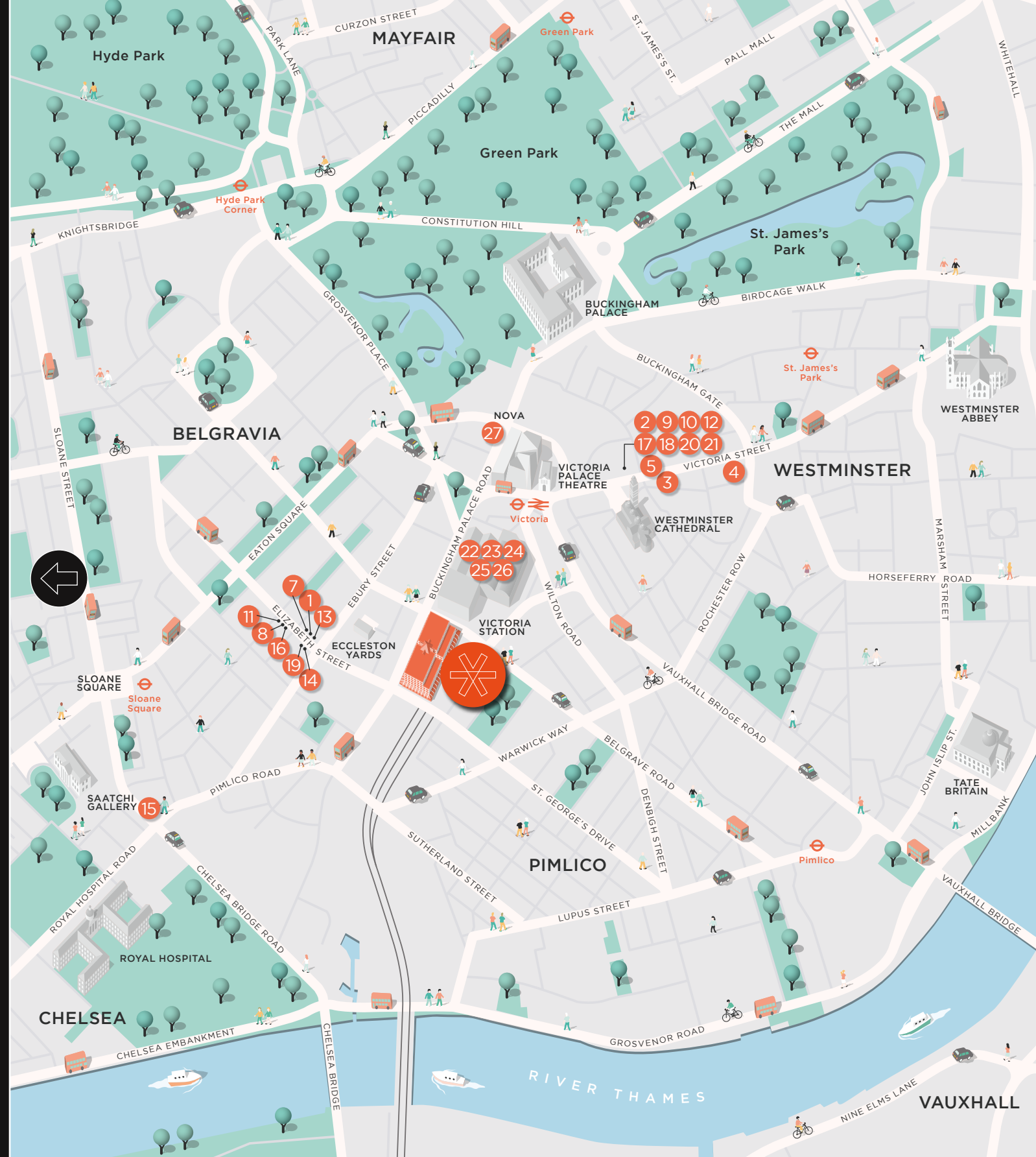
Location

Area Map

Site Plan

Retail Units

Contact



FOOD & DRINK

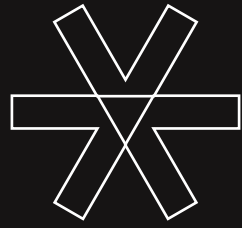
RETAILERS

LEISURE

## Retailers

RETAILERS

01. Donna Ida
02. Hobbs
03. Hotel Chocolat
04. House of Fraser
05. Hugo Boss
06. Hush (location unknown)
07. Jo Loves
08. Les Senteurs
09. L'Occitane
10. Molton Brown
11. Mungo & Maud
12. Nespresso
13. NRBY Clothing
14. Papouelli
15. Potterton Books
16. Philip Treacy
17. Runners Need
18. Space NK
19. Stivaleria Cavallin
20. T2 Tea
21. Zara
22. Sainsbury's
23. Holland and Barrett
24. Marks & Spencer
25. Scribbler
26. Hema
27. Maison Beaute



Introduction

**Your Neighbourhood**

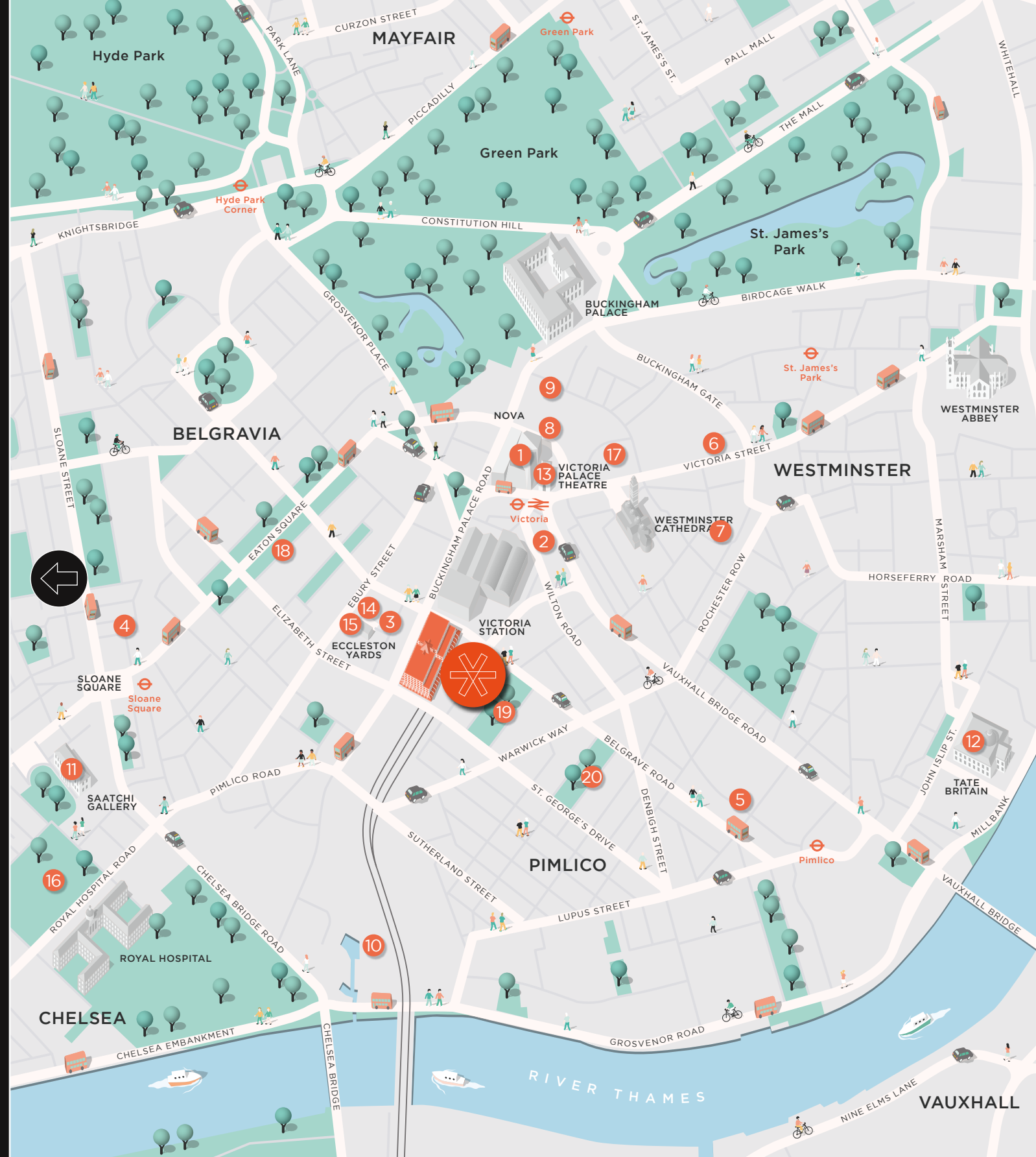
Location

Area Map

Site Plan

Retail Units

Contact



FOOD & DRINK  
RETAILERS  
LEISURE

## Leisure

LEISURE

01. 1Rebel
02. Apollo Victoria Theatre
03. Barry's
04. Cadogan Hall
05. Cave
06. Curzon Cinema
07. Gymbox
08. H2 Club
09. The Other Palace Theatre
10. Purple Dragon
11. Saatchi Gallery
12. Tate Britain
13. Victoria Palace Theatre
14. Light Centre Belgravia
15. Re:Mind Meditation

GREEN SPACES

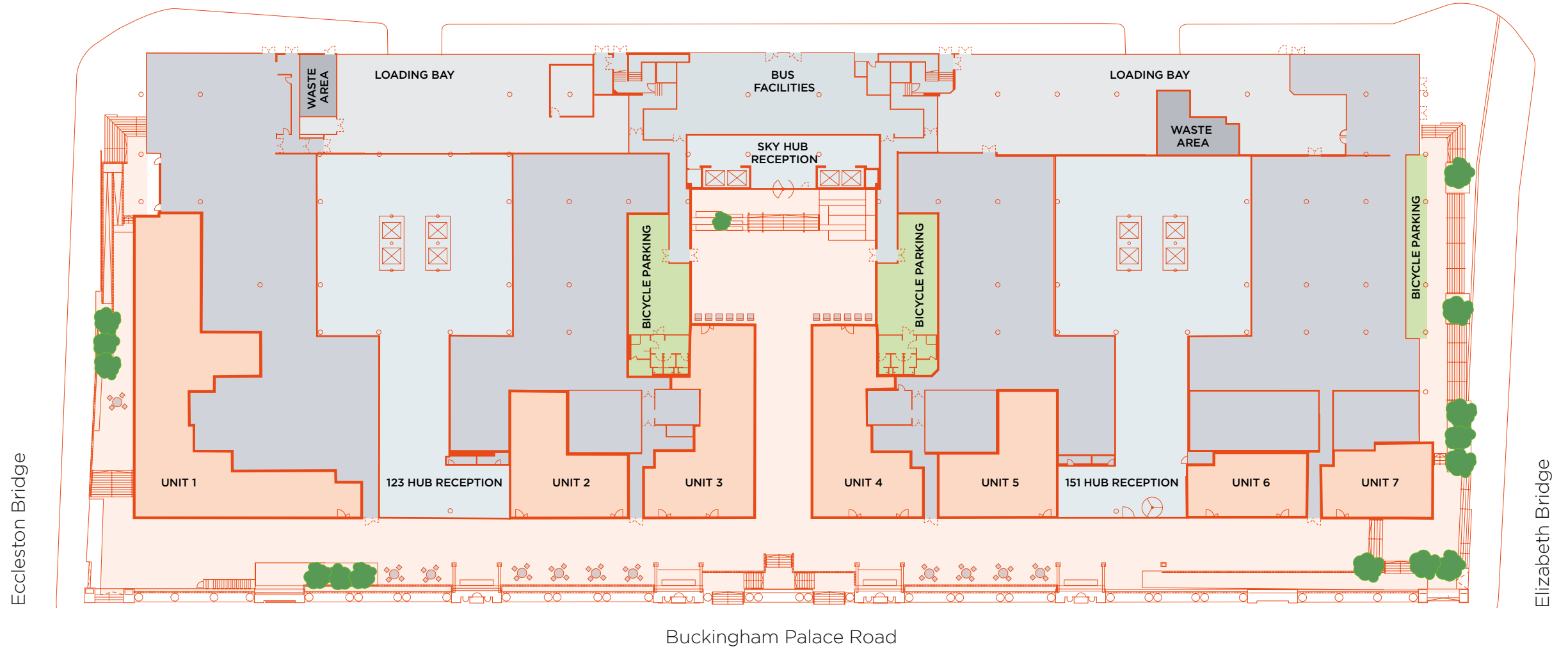
16. Burton Court
17. Cardinal Place Roof Garden
18. Eaton Square Gardens
19. Eccleston Square
20. Warwick Square





# Site Plan

- Units
- Public Realm
- Atriums
- Loading Bays



- Introduction
- Your Neighbourhood
- Site Plan**
- Retail Units
- Contact





# Unit 1

463 sq m / 4,983 sq ft

[Introduction](#)

[Your Neighbourhood](#)

[Site Plan](#)

## Retail Units

**Unit 1**

Unit 2

Unit 3

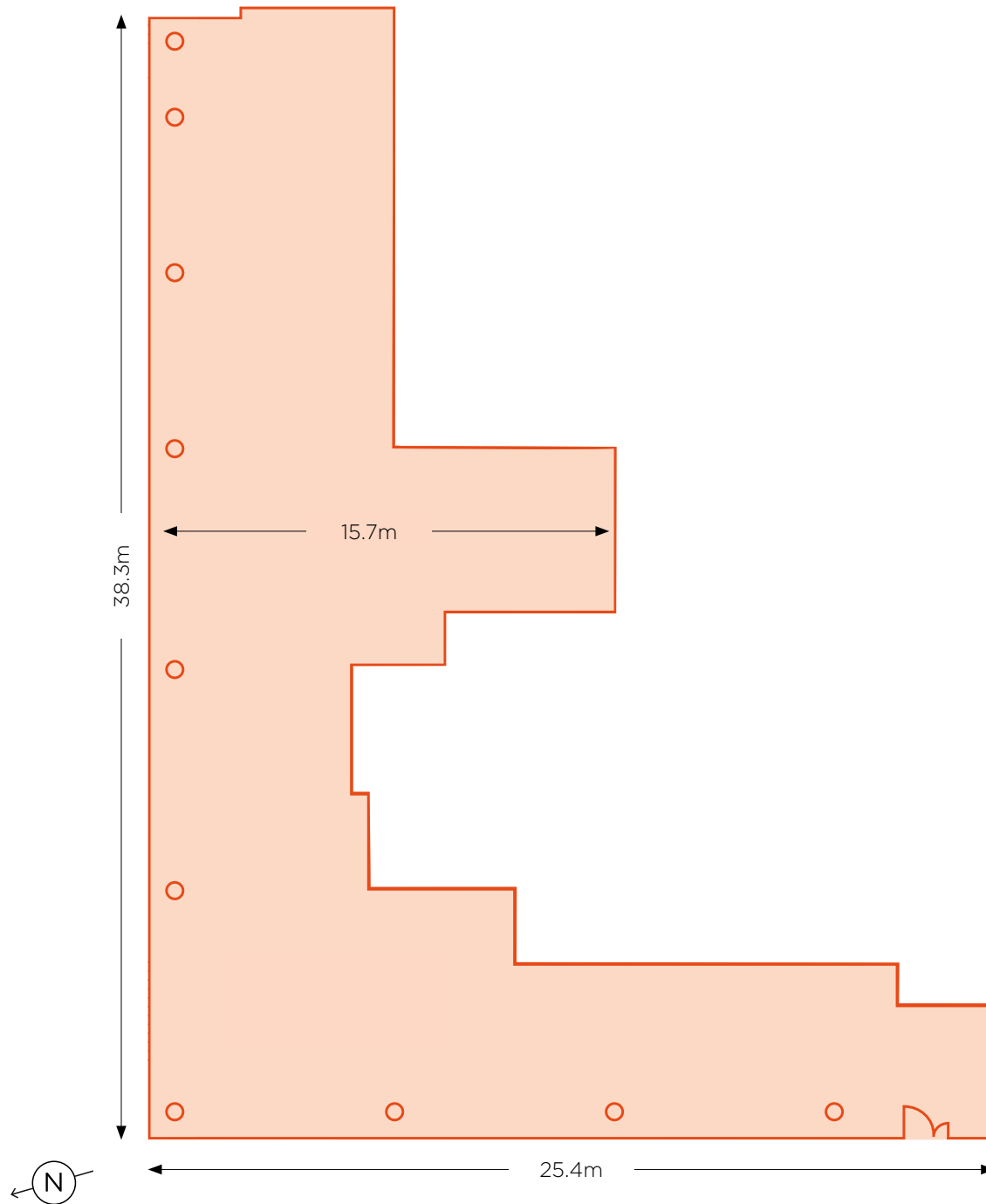
Unit 4

Unit 5

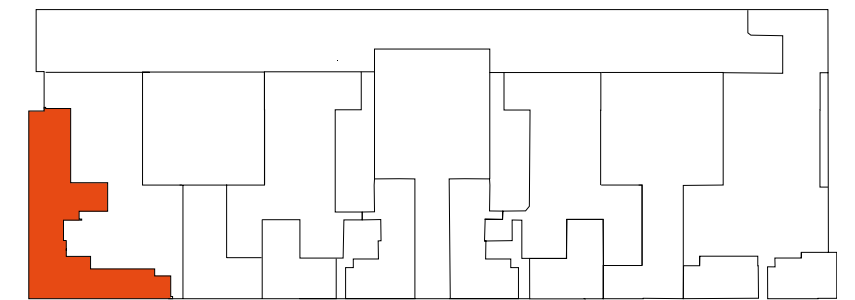
Unit 6

Unit 7

[Contact](#)



UNIT NUMBER	The HUB Unit 1
PERMITTED USE:	A1/A3/A4
AREA (NIA):	463 Sq.m / 4,983 sq ft
FLOOR FINISH:	115mm Finishes zone above concrete slab
FLOOR TO CEILING:	3100
CEILING FINISH:	Exposed services
SHOP FRONT:	Laminated low iron glazing
WATER SUPPLY:	32mm supply.
GAS SUPPLY:	65mm supply available
ELECTRICITY SUPPLY	300A TP&N
HEATING/HOT WATER:	Managed by tenant
COOLING:	Managed by tenant
DRAIN CONNECTIONS:	Pumped drainage by tenant



Buckingham Palace Road



# Unit 2

173 sq m / 1,862 sq ft

Introduction

Your Neighbourhood

Site Plan

**Retail Units**

Unit 1

**Unit 2**

Unit 3

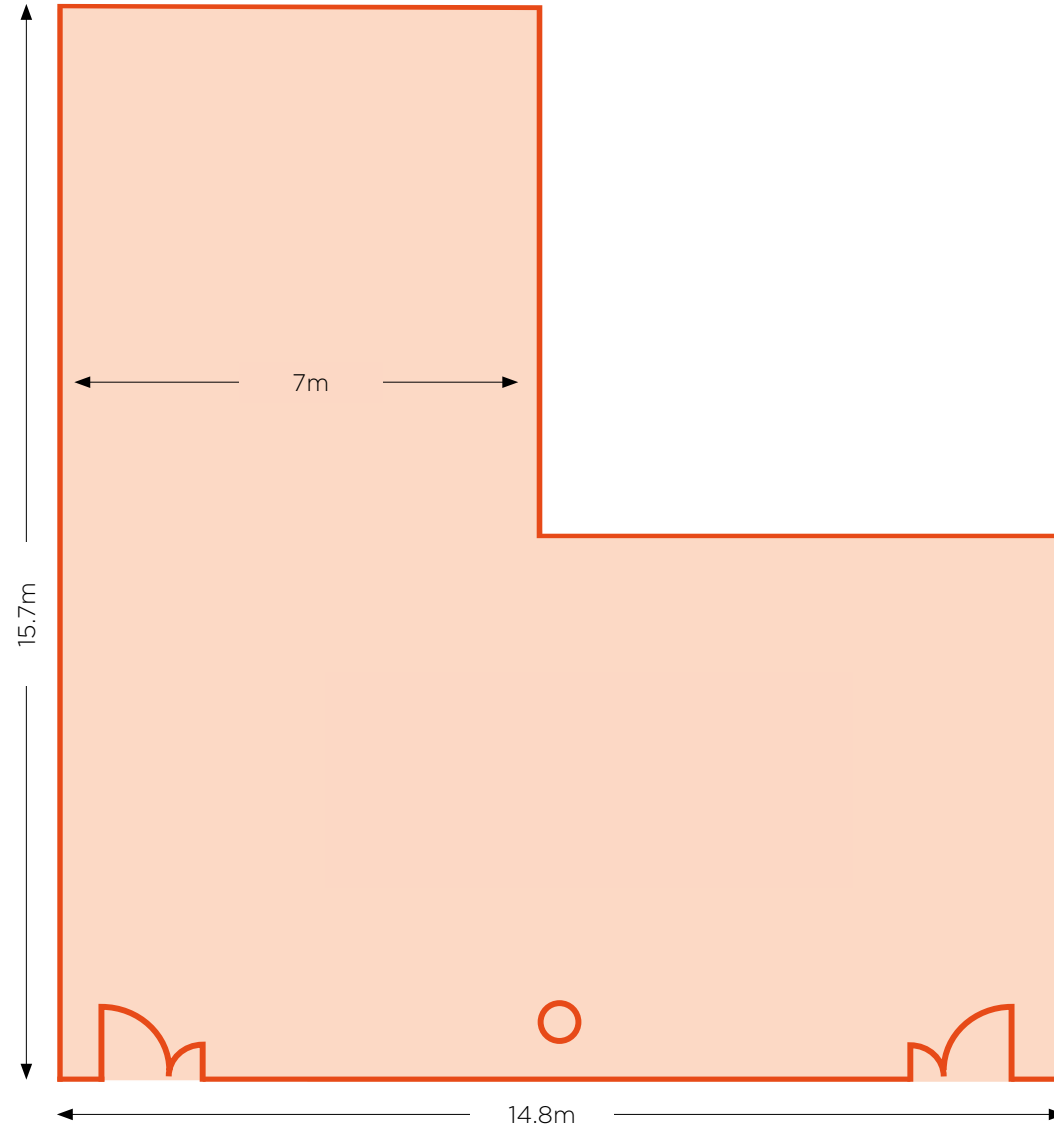
Unit 4

Unit 5

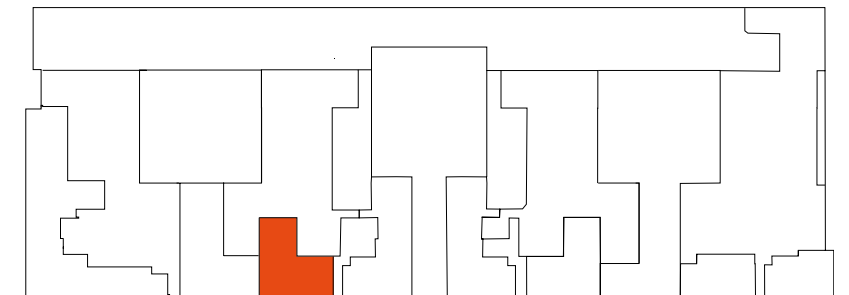
Unit 6

Unit 7

Contact



UNIT NUMBER	The HUB Unit 2
PERMITTED USE:	A1/A3/A4
AREA (NIA):	172 Sq.m / 1,862 sq ft
FLOOR FINISH:	115mm Finishes zone above concrete slab
FLOOR TO CEILING:	3100
CEILING FINISH:	Exposed services
SHOP FRONT:	Laminated low iron glazing
WATER SUPPLY:	28mm supply
GAS SUPPLY:	Not available
ELECTRICITY SUPPLY	100 A TP&N
HEATING/HOT WATER:	Managed by tenant
COOLING:	Managed by tenant
DRAIN CONNECTIONS:	Pumped drainage by tenant



Buckingham Palace Road



# Unit 3

232 sq m / 2,497 sq ft

Introduction

Your Neighbourhood

Site Plan

**Retail Units**

Unit 1

Unit 2

**Unit 3**

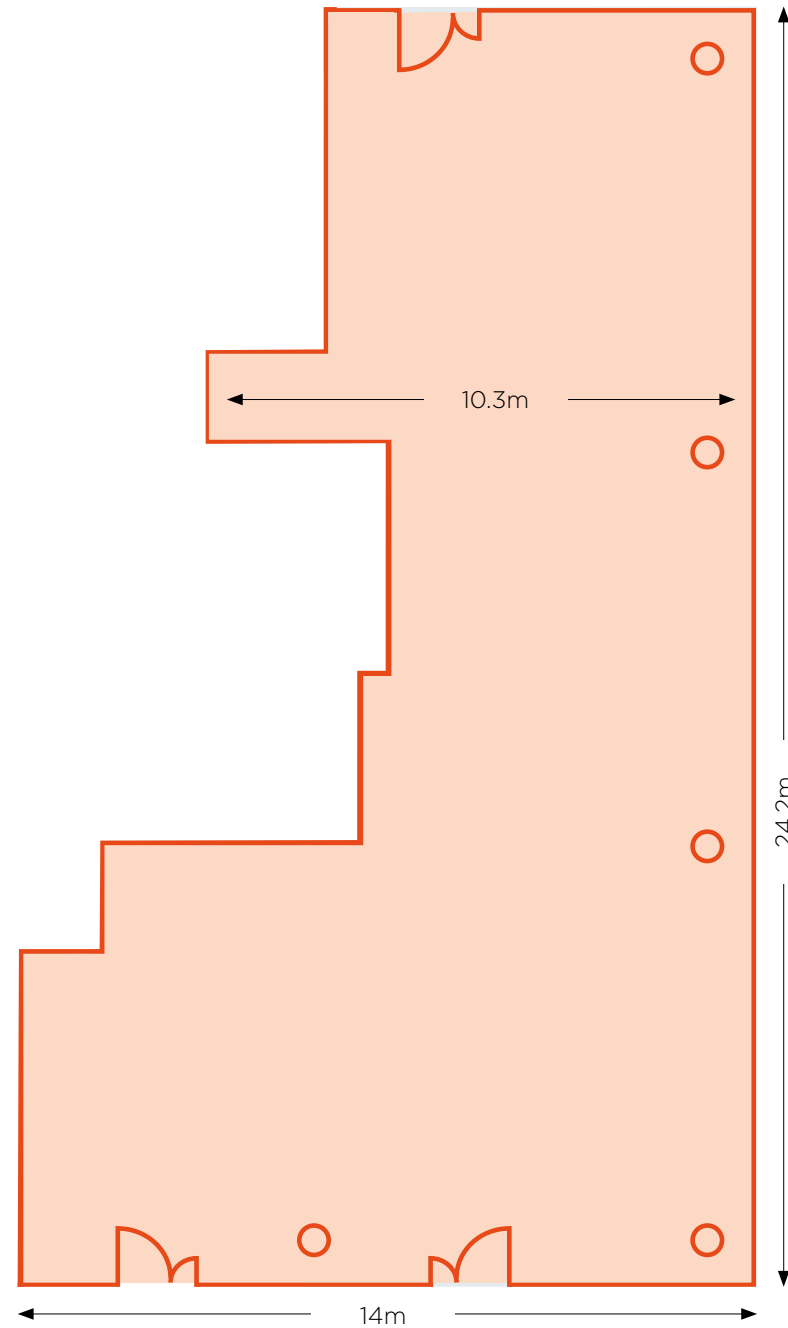
Unit 4

Unit 5

Unit 6

Unit 7

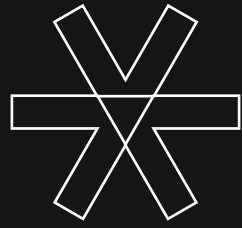
Contact



UNIT NUMBER	The HUB Unit 3
PERMITTED USE:	A1/A3/A4
AREA (NIA):	232 Sq.m / 2,497 sq ft
FLOOR FINISH:	115mm Finishes zone above concrete slab
FLOOR TO CEILING:	3100
CEILING FINISH:	Exposed services
SHOP FRONT:	Laminated low iron glazing
WATER SUPPLY:	32mm supply
GAS SUPPLY:	65mm supply available
ELECTRICITY SUPPLY	200A TP&N
HEATING/HOT WATER:	Managed by tenant
COOLING:	Managed by tenant
DRAIN CONNECTIONS:	Pumped drainage by tenant



Buckingham Palace Road



# Unit 4

232 sq m / 2,497 sq ft

Introduction

Your Neighbourhood

Site Plan

**Retail Units**

Unit 1

Unit 2

Unit 3

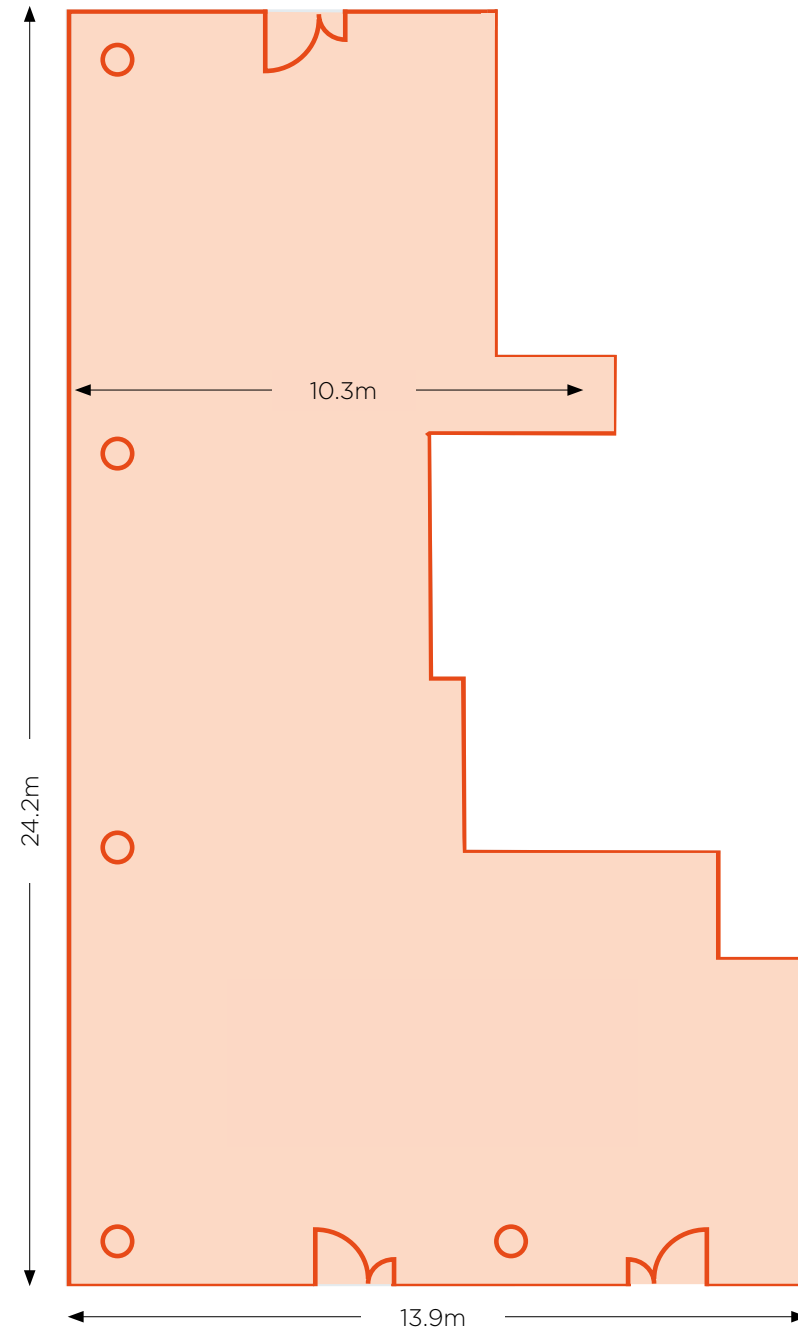
**Unit 4**

Unit 5

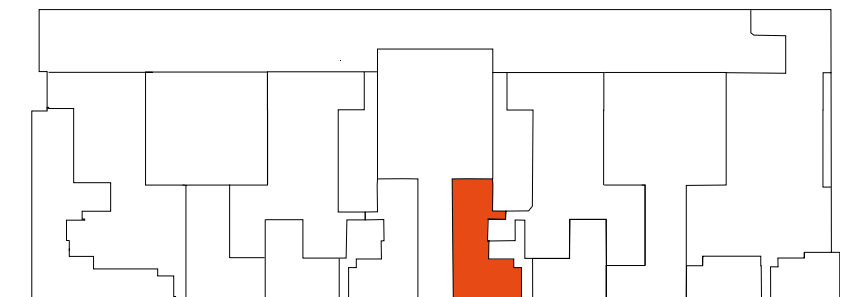
Unit 6

Unit 7

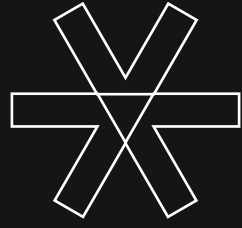
Contact



UNIT NUMBER	The HUB Unit 4
PERMITTED USE:	A1/A3/A4
AREA (NIA):	231 Sq.m / 2,497 sq ft
FLOOR FINISH:	115mm Finishes zone above concrete slab
FLOOR TO CEILING:	3100
CEILING FINISH:	Exposed services
SHOP FRONT:	Laminated low iron glazing
WATER SUPPLY:	28mm supply
GAS SUPPLY:	Not available
ELECTRICITY SUPPLY	200 A TP&N
HEATING/HOT WATER:	Managed by tenant
COOLING:	Managed by tenant
DRAIN CONNECTIONS:	Pumped drainage by tenant



Buckingham Palace Road



# Unit 5

171 sq m / 1,840 sq ft

Introduction

Your Neighbourhood

Site Plan

**Retail Units**

Unit 1

Unit 2

Unit 3

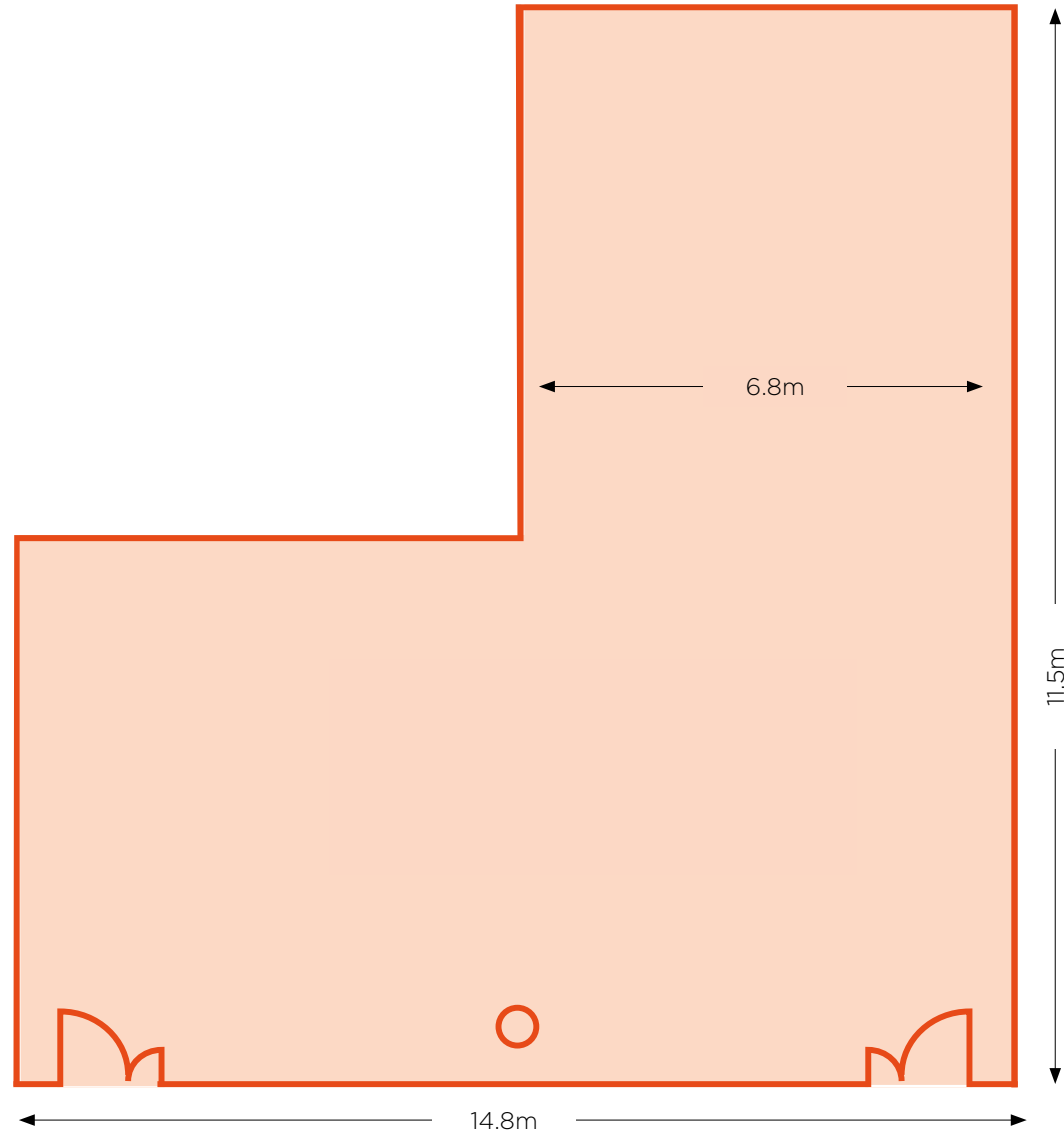
Unit 4

**Unit 5**

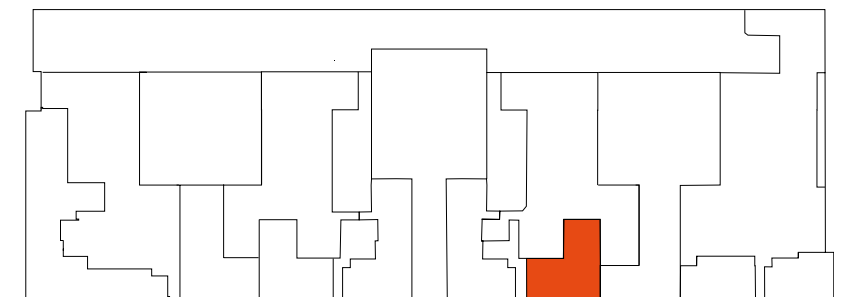
Unit 6

Unit 7

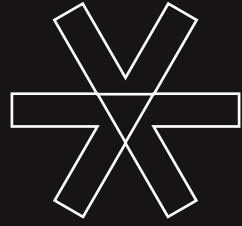
Contact



UNIT NUMBER	The HUB Unit 5
PERMITTED USE:	A1/A3/A4
AREA (NIA):	171 Sq.m / 1,840 sq ft
FLOOR FINISH:	115mm Finishes zone above concrete slab
FLOOR TO CEILING:	3100
CEILING FINISH:	Exposed services
SHOP FRONT:	Laminated low iron glazing
WATER SUPPLY:	28mm supply
GAS SUPPLY:	Not available
ELECTRICITY SUPPLY	100 A TP&N
HEATING/HOT WATER:	Managed by tenant
COOLING:	Managed by tenant
DRAIN CONNECTIONS:	Pumped drainage by tenant



Buckingham Palace Road



# Unit 6

115 sq m / 1,237 sq ft

Introduction

Your Neighbourhood

Site Plan

**Retail Units**

Unit 1

Unit 2

Unit 3

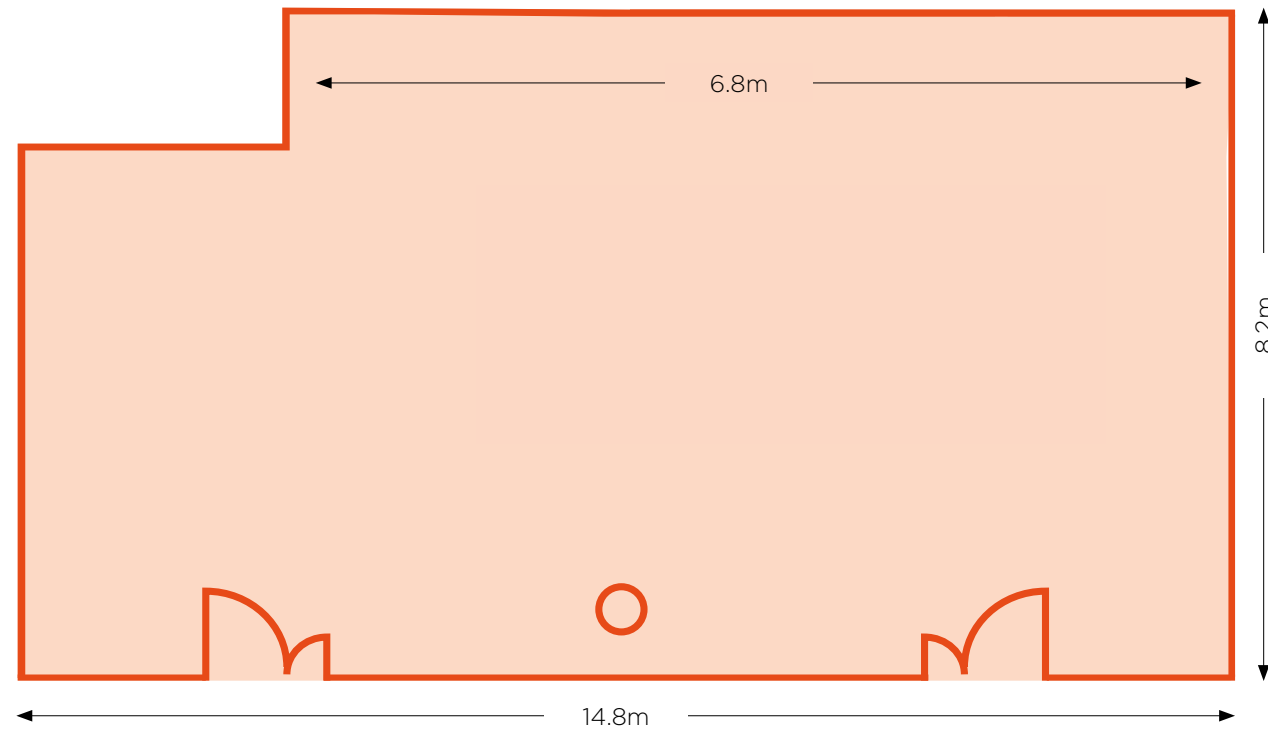
Unit 4

Unit 5

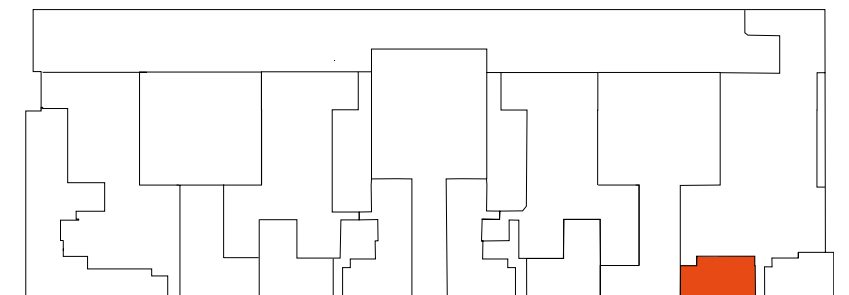
**Unit 6**

Unit 7

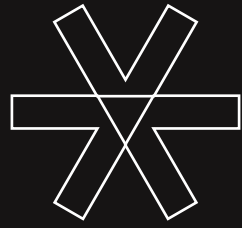
Contact



UNIT NUMBER	The HUB Unit 6
PERMITTED USE:	A1/A3/A4
AREA (NIA):	114 Sq.m / 1,237 sq ft
FLOOR FINISH:	115mm Finishes zone above concrete slab
FLOOR TO CEILING:	3100
CEILING FINISH:	Exposed services
SHOP FRONT:	Laminated low iron glazing
WATER SUPPLY:	28mm supply
GAS SUPPLY:	Not available
ELECTRICITY SUPPLY	100 A TP&N
HEATING/HOT WATER:	Managed by tenant
COOLING:	Managed by tenant
DRAIN CONNECTIONS:	Pumped drainage by tenant



Buckingham Palace Road



# Unit 7

117 sq m / 1,259 sq ft

Introduction

Your Neighbourhood

Site Plan

**Retail Units**

Unit 1

Unit 2

Unit 3

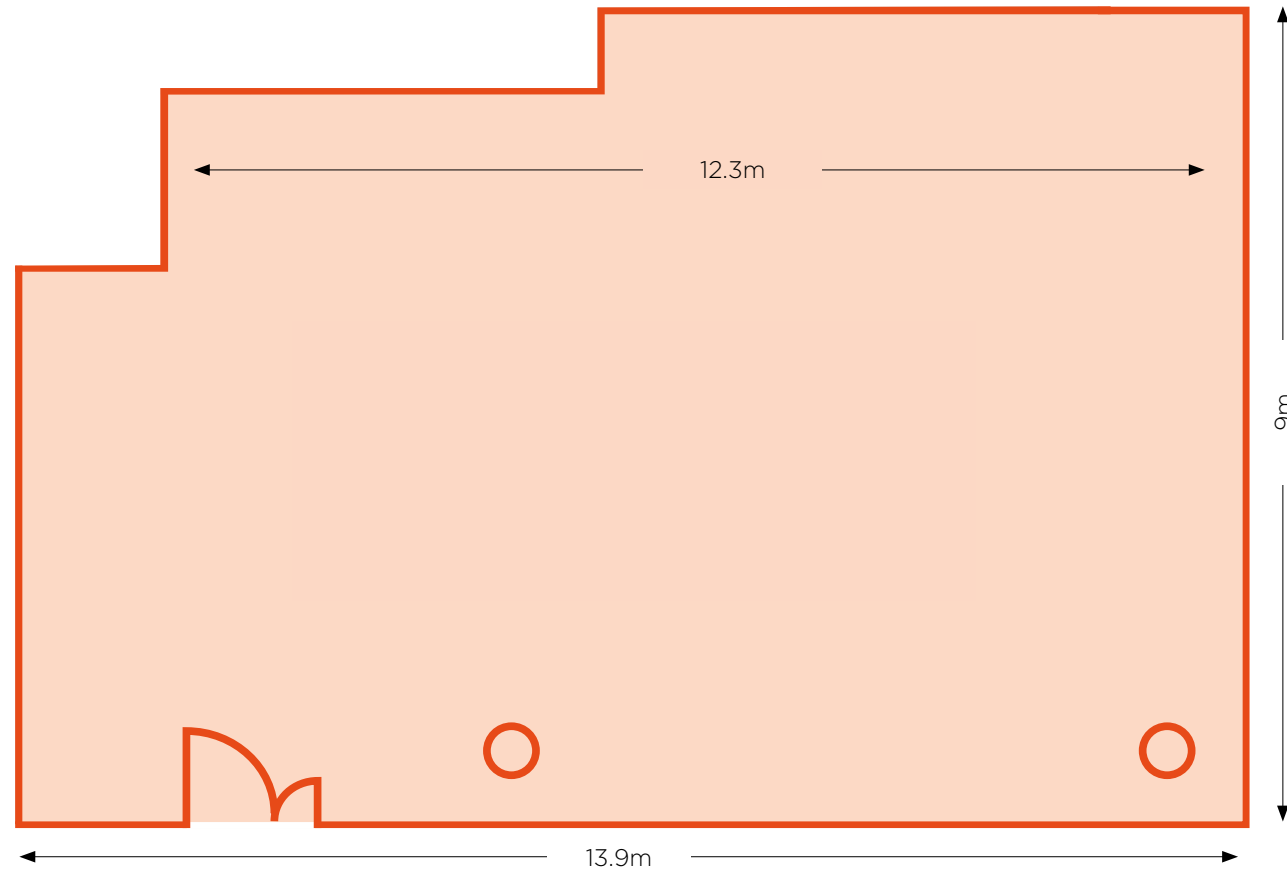
Unit 4

Unit 5

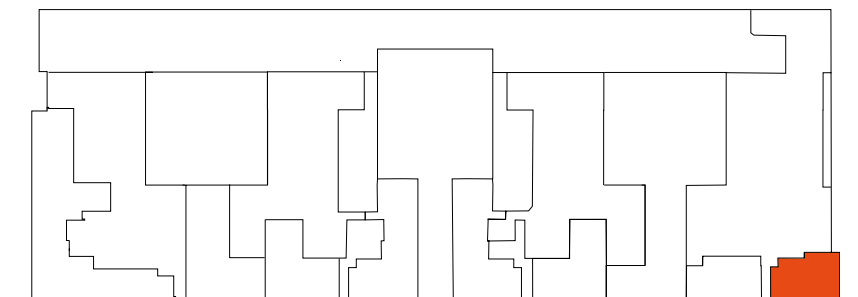
Unit 6

**Unit 7**

Contact



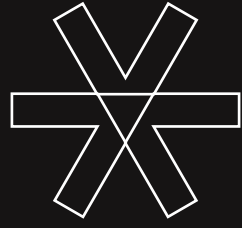
UNIT NUMBER	The HUB Unit 7
PERMITTED USE:	A1/A3/A4
AREA (NIA):	116 Sq.m / 1,259 sq ft
FLOOR FINISH:	115mm Finishes zone above concrete slab
FLOOR TO CEILING:	3100
CEILING FINISH:	Exposed services
SHOP FRONT:	Laminated low iron glazing
WATER SUPPLY:	28mm supply
GAS SUPPLY:	Not available
ELECTRICITY SUPPLY	100 A TP&N
HEATING/HOT WATER:	Managed by tenant
COOLING:	Managed by tenant
DRAIN CONNECTIONS:	Pumped drainage by tenant



Buckingham Palace Road







**Introduction**

Your Neighbourhood

Site Plan

Retail Units

**Contact**

## Team

**ASSET MANAGER**

Gaw Capital

**ARCHITECT**

Morrow & Lorraine

**BUILDING AND FACILITIES MANAGER**

Metrus

**PROJECT MANAGERS**

Buro Four



**EMILY VIOLARIS**

T +44(0) 2070 875 682

M +44(0) 7581 468 140

Emily.Violaris@eu.jll.com

**PUJA DOWLANI**

T +44(0) 2073 995 869

M +44(0) 7720 070 474

Puja.Dowlani@eu.jll.com

The agents advise that these particulars do not form part of an offer or contract and are intended for general guidance purposes only. They have been prepared from information supplied to us and interested parties should satisfy themselves as to the accuracy of the floor plans, tenancy details, etc. and whether the premises are fit for purpose before entering into a contract. Floor areas, measurements and distances are not up to scale. All prices and rents are exclusive of VAT and the property is offered subject to contract. September 2020.

